

18th June 2026
T2, Wk 9

THE LINK



School Calendar

Week 10

Tues 23rd - Yr5/6 Sovereign Hill
Excursion

Fri 26th - 11.30am Trash Test
Dummies & End T2, 2pm
dismissal

Term 3 - July 13th

Week 1 - Monday 13 July
Semester 1 Reports available

Wk 1-10 - Fridays Robotics Club

Week 2 - Parent Teacher
Interviews

Week 4

Tuesday 4th - Aug Staff CPR
Update

Week 5- Meals on Wheels

Thursday 12th - Yr5/6 Ecolinc
Excursion

Week 7 - Book Week

Friday 28th Year 5/6 Earth Ed
Excursion

Week 10 - 2027 Enrolments due

Friday 18th September - End T3

D

a

N

C

E



RESPECT RESILIENCE KINDNESS HONESTY ASPIRATION

Principal's Report

The School Dance

Last night our school community showed up for the annual School Dance. Thank you to our families for coming out, getting the kids decked out in their costumes and hitting the dance floor for an hour of dance fun. Thank you to Parents Club for running the raffle - congratulations to Janelle Parker who won the hamper. \$326.00 raised by the raffle.

Parent Payments

Families with unpaid Parent Payments will be receiving an account from the General Office in the coming days. At our school, we are committed to providing every child with an experience-rich education that extends well beyond the classroom. Whether it's quality classroom resources, engaging learning experiences, school camps, excursions, incursions, or special programs, we strive to offer opportunities that inspire curiosity, build confidence and create lasting memories.

We are equally committed to keeping the cost of education as affordable as possible for families. We recognise that many households are managing increasing financial pressures, and we work hard to minimise the costs passed on to parents. We also provide a range of supports, including access to second-hand school uniforms, assistance through available government support programs, flexible payment arrangements, and individual support for families experiencing financial hardship.

Parent Payments are an important part of helping us achieve this balance. These contributions go directly towards purchasing essential classroom materials and resources that students use every day, allowing us to direct other school funds towards enriching opportunities such as camps, specialist programs and improvements to our learning environments.

If you have not yet paid your 2026 Parent Payments, we kindly ask that you consider doing so as soon as you are able. Every contribution makes a genuine difference and helps ensure we can continue providing high-quality educational experiences for all students while keeping additional costs to families to a minimum. If you are experiencing financial difficulty, please contact the school office. All conversations are treated with sensitivity and confidentiality, and we are committed to working with families to ensure every child can participate fully in school life.

Thank you for your ongoing partnership and support. Together, we can continue to provide outstanding learning opportunities while ensuring every child feels included, supported and able to participate in all aspects of school life.

Parent Visitors at School

Parents are asked to report to the General Office upon arrival at the school. If you need to speak to a member of staff Jenny or Shirlee will locate the staff member - parents are asked not to go directly into staff offices. Parents and visitors are also asked to sign in. Parents collecting students at dismissal time are asked to enter via the front pedestrian gates and leave other gates for staff to open and secure. Your cooperation with this matter assists the school with managing everyone's safety and wellbeing.

Dogs and Cats on School Grounds

It has become an emerging issue to find cat and dog faeces on school grounds - with this often in areas that children are walking or playing. Members of the public are reminded that school grounds are not public play areas and are not to be used for exercising and walking animals. Please help to keep our grounds clean by keeping animals out.

Principal's Report

School Uniforms

Students are expected to wear their uniforms to school each day. These look fantastic and as we know, one of our important behaviours is to "take pride in our school and our uniform". We really appreciate when parents name these items clearly as it shows us that they are valued and are easier to return to the rightful owner.

Year 3/4 Excursion - EarthEd

Students travelled to Earth Ed last Thursday to investigate the geological forces of erosion and weathering on the Earth's landscape. They made field observations in Woookarung Regional Park, using VR to explore coastal erosion, conduct weathering experiments and engineer solutions to erosion. Students had the opportunity to explore the differences between weathering and erosion, observe the effects of erosion and investigate ways to mitigate them, and identify the agents of erosion and weathering that lead to landscape change over time.

Year 5/6 Excursion - Ballarat/Sovereign Hill

As part of our preparation for Term 4 learning, the Year 5/6 students will visit Sovereign Hill for an immersive excursion linked to our Australian History unit. This engaging experience will provide students with firsthand insights into life in the Australian colonies during the 19th century, including the impact of the gold rush, daily life, work, and the growth of colonial settlements. Through interactive activities, historical demonstrations, and exploration of the recreated township, students will build valuable background knowledge that will support and enrich their understanding of Australia's colonial development throughout the upcoming history unit.

River Detectives Excursion

Next Thursday 25th June the Year 5/6 class will be on an excursion to Taylors Farm at Gowar East to collect their first waterway samples and begin monitoring the health of the local environment from the river banks of the picturesque Avoca River. The River Detectives program supports Year 5/6 students to develop Science, Geography and Sustainability knowledge through hands-on investigations of local waterways. Students collect and analyse environmental data to understand ecosystem health and human impacts on the environment.

Trash Test Dummies

Proudly bought to us by the St Arnaud Arts Council, Trash Test Dummies is a physical theatre based acrobatics performance suitable for students of all ages. This event is eligible for CSEF. Please ensure your consent form is returned with payment by next Wednesday.

Junior School Council PJ Day

Next Friday our Junior School Council are having PJ Day and invite students and staff to participate. Students must wear suitable outdoor footwear, no slippers, slides, crocs, or ugg boots. PJs should be wellfitting and warm for outdoor wear - no oversized oodies or dressing gowns please. Students will walk to and from the Town Hall for a performance on this day.

School Wide Positive Behaviours - Bronze Award Lunch

Next Wednesday we will be holding our Bronze Award Lunch for students who have achieved their Bronze Certificate for expected behaviours. Children who are still working towards reaching this achievement will enjoy their lunch in Term 3. Please assist us in managing expectations by explaining this to your children at home.

Melissa Mitchell.
Principal

VALUE AWARD WINNERS



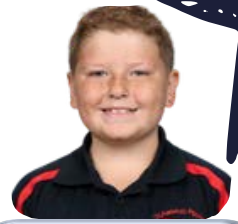
P/1E
Barlow Knight



P/1E
Connor Chugg



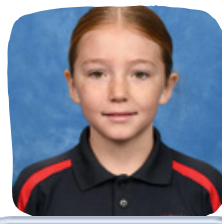
2C
Alistair Grahame



3/4A
Noah Soderman



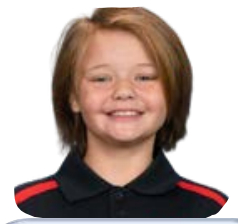
4/5W
Matilda Wallace



4/5W
Dakoda Jackson



5/6T
Thomas White



H & P.E.
Bridget Culliver



I.C.T.
Ruby Salter



ART
Grace Burgess



Kindness
Lailah Teggatz



BRONZE AWARDS



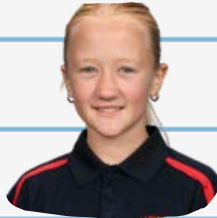
Tahnaya Murray



Lewis Coates



Alita Mitchell



Issy Green



Pippa O'Donnell



RUSTY'S HOME READING



Regular reading significantly enhances children's academic development by improving cognitive skills, boosting vocabulary, and fostering a love of learning. It supports academic success by strengthening comprehension, critical thinking, and problem-solving abilities.

50

Ryan Thursby
Pippa O'Donnell

50

Louella Coloe
Otis Dyke

75

Maria Taylor

100

Alistair Grahame

125

Evy Sclini

Rusty's Rocket Maths



Hugh Green

Indi Gigg

Max S

MRS WEIR'S WELLBEING WONDERINGS



Words of Wisdom

Erikah McIntyre



Why did you apply for the role of Junior School Council?

I wanted to help everyone. I think it is important to show people that you want to help them if they are sad or need some extra help.

What does leadership mean to you? Leadership means to be a kind person and to step up and be nice and be a good role model to other students.

What personal qualities do you bring to Leadership?

One thing I really like is to support other people with being kind to each other.

I want to encourage everyone to start making more friends.

I want people to be able to talk to others, who they may not think would be their friend. You just never know, you might learn something nice about them.



Weekly Quote



Wellbeing Leaders



**Zarleya
Dunstan**



**Ella
Wait**



**Maria
Taylor**



**Mrs
Weir**

